



LOUVRE. VENT. TECHNOLOGY.

## PRODUCT-OVERVIEW

Our solutions at a glance



# FIEGER LOUVRE WINDOWS

## UNIQUE & PATENTED

Since its foundation in 2000, FIEGER has developed into a leading manufacturer and global supplier of louvre windows.

New demands in functionality and design inspire our focus on top performance. Key drivers for us are precision and quality. FIEGER stands for innovation, customer service and reliability. Sustainability is integral to our business ethics in the manufacture of our louvre windows.

The FIEGER product portfolio includes traditional louvre windows as well as bespoke and innovative solutions using our patented louvre technology. Our maintenance-free rack and pinion drive guarantees optimal functionality and a long lifecycle for our products.

By using natural energy sources and thermal technology, FIEGER ventilation technology offers an environmentally friendly, healthy, cost-effective and contemporary alternative to air conditioning and other mechanical ventilation systems, as well as internationally certified smoke extraction in case of fire.

FIEGER stands for high-quality manufacture based in our modern production plant, situated in the heart of Germany.

For more information, see  
[www.fieger-lamellenfenster.de/us](http://www.fieger-lamellenfenster.de/us)

All FIEGER louvres are available with manual, electric or pneumatic actuators.

### NATURAL VENTILATION

#### THE CONTEMPORARY ALTERNATIVE TO AIR-CONDITIONING AND OTHER MECHANICAL VENTILATION SYSTEMS

Natural ventilation, with its direct effect on CO<sub>2</sub> reduction, as well as smoke-free escape routes in emergencies, are fundamentally important factors in architectural design today.

FIEGER louvre windows can make a significant contribution to reducing harmful emissions as well as energy costs. Together with innovative mechanics and sophisticated ventilation technology, and given the right basic conditions, the use of air conditioning can be reduced substantially.

With the use of intelligent ventilation solutions, FIEGER louvre windows create optimum fresh air supply as well as a healthier working and living environment.

### EMERGENCY SMOKE EXHAUST

#### THE INTERNATIONALLY CERTIFIED SOLUTION FOR SMOKE AND HEAT VENTILATION

FIEGER louvre windows can also be integrated into fire protection concepts as NSHEVs (natural smoke and heat exhaust ventilation devices).

A building fire produces toxic gases and smoke. An efficient ventilation system can reliably dissipate smoke & heat in the event of a fire. Escape routes remain largely smoke-free. Fire brigades and rescue services can work unhindered to evacuate buildings quickly and save human lives. FIEGER louvre windows offer the optimal and internationally certified solution for smoke and heat ventilation.



Geschwister Scholl School Bensheim



Mercedes Car Showroom Hamburg

## INSULATED TRIPLE GLAZING 40 MM



Details always make a big difference. Visually the FLW 40 has a slightly deeper frame, but this of course means much better thermal insulation. Which is also why the FLW 40 provides double the value. On the one hand, it's architecturally good-looking and on the other it reduces energy costs.

### Glazing



Triple-glazed or insulated aluminium panel with a total thickness of 36 to 40 mm. Including EPDM gaskets.

### Certification

**NSHEV** certified in accordance with EN 12101-2  
**Windows and Doors Product Standard** certified in accordance with EN 14351-1

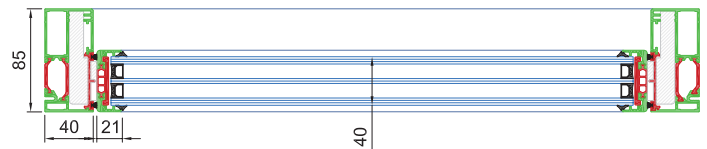
### Properties

Watertightness classification – EN 12208	up to Class 8A
Air permeability classification – EN 12207	Class 4
Tested sound reduction (Rw)	41 dB
Impact resistant in accordance with DIN 18032-3	Yes
Fall protection in accordance with DIN 18008-4 Building Regulations, Section A part 2	Yes
Security in accordance with EN 1627:RC2	Yes
Barrier Load tested in accordance with BS 6180:2011	Yes
Anti-trap protection in accordance with The Machinery Directive 2006/42/EG	SK 3/SK 4



Student Hub, Queens University Belfast

### Plan View



max frame width: 2500 mm

## INSULATED DOUBLE OR TRIPLE GLAZING 28/ 32 MM



Louvre windows offer you numerous economical, ecological as well as aesthetic advantages. Last but not least, they ensure a maximum degree of individuality. This, in turn, allows you to give free rein to your creativity. A good example of this is the FLW 32 which sets new standards regarding quality, design and comfort.

### Glazing



Double or triple-glazed or insulated aluminium panel with a total thickness of 28/32 mm. Including EPDM gaskets.

### Certification

**NSHEV** certified in accordance with EN 12101-2  
**Windows and Doors Product Standard** certified in accordance with EN 14351-1

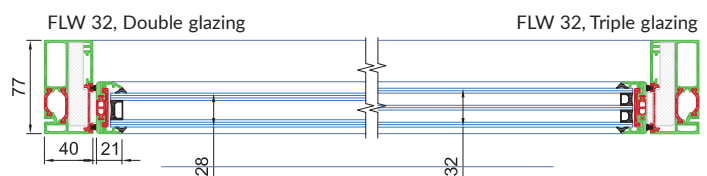
### Properties

Watertightness classification – EN 12208	Class 5A
Air permeability classification – EN 12207	Class 4
Tested sound reduction (Rw) (FLW28)	40 dB
Impact resistant in accordance with DIN 18032-3	Yes
Fall protection in accordance with DIN 18008-4 Building Regulations, Section A part 2	Yes
Barrier Load tested in accordance with BS 6180:2011	Yes
Anti-trap protection in accordance with The Machinery Directive 2006/42/EG	SK 3/SK 4



Health & Care Centre Banbridge

### Plan View



max frame width: 2500 mm



# ALUMINIUM BLADES



It always depends upon the idea. If you're looking for a glass-free louvre vent, then we can supply one. It's not only possible, but can be advantageous: for example for internal applications such as smoke shafts.

## Glazing



Frameless thermally broken composite aluminium



smoke shaft

## Properties

Anti-trap protection in accordance with The Machinery Directive 2006/42/EG

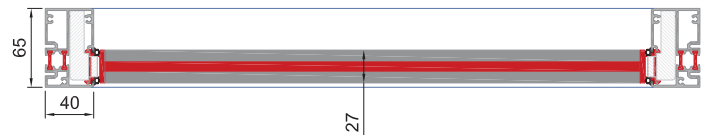
SK 3/SK 4

## Certification

**NSHEV** certified in accordance with EN 12101-2 up to 1,3m<sup>2</sup> single louvre, or 2,6m<sup>2</sup> for double-elements

**Windows and Doors Product Standard** certified in accordance with EN 14351-1

## Plan View



max frame width (without centre mullion): 1300 mm  
louvre height: 132 mm (fixed)  
vent height based on multiples of louvres

# SINGLE-GLAZED 8 TO 13.52 MM



Having a clear view in life is something you can never get enough of – and with FIEGER you have a choice. Our single-glazed FLM range offers you bolted (PG) or linear (LG) glazing brackets. In addition, the non-thermally broken frames are ideal as secondary facades, for internal applications as well as unheated spaces.

## Glazing

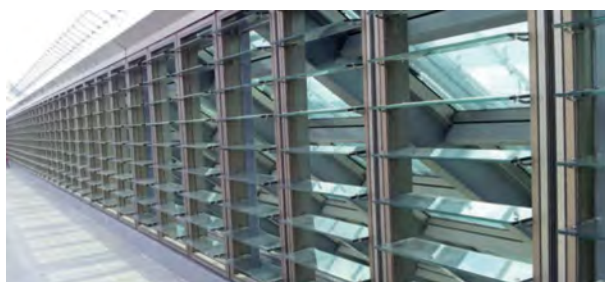


8 to 13.52 mm single glazing (toughened or laminated) in an overlapping or stepped arrangement.

## Certification

**NSHEV** certified in accordance with EN 12101-2

**Windows and Doors Product Standard** certified in accordance with EN 14351-1



University of Brisbane

## Properties

Tested sound reduction (R<sub>w</sub>)

25 dB

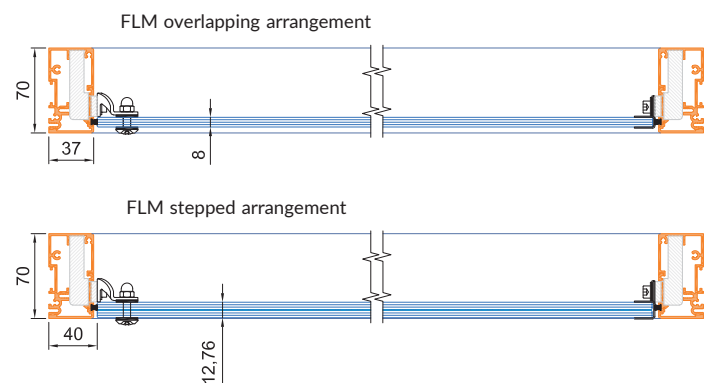
Barrier Load tested in accordance with BS 6180:2011

Yes (12.76mm laminated glass)

Anti-trap protection in accordance with The Machinery Directive 2006/42/EG

SK 3/SK 4

## Plan View



max frame width (without centre mullion): 1600 mm

---

## BESPOKE DESIGN SERVICE

---



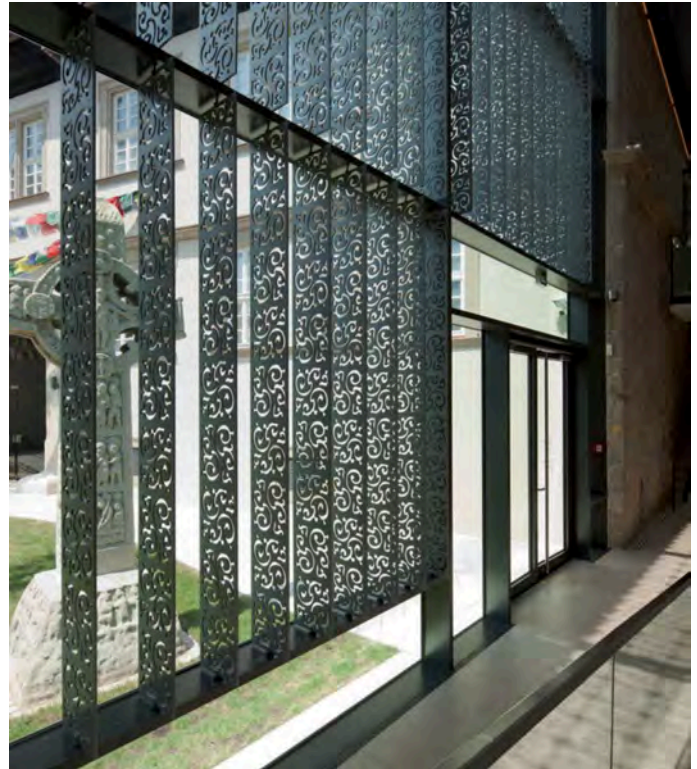
You have the ideas, we have the know-how. Our FIEGER Design Department will evaluate the feasibility of your ideas and help you turn them into reality.

Our services range from modifying to designing completely new window systems, specially tailored to your requirements.

### **Our main activities cover the following:**

- Development of systems with moveable and/or fixed FIEGER blades made from aluminium or glass with bespoke extrusions
- Description, building of prototypes and testing of new systems according to your requirements.
- Development of new actuation technologies, control and sensor technologies related to FIEGER louvre vents.

Innovation and precision engineering is of utmost importance to us, which is why our R&D Department is led by the company founder and patent holder, Thomas Fieger, himself.



Knauf Museum Iphofen





Deutschhaus-Gymnasium Würzburg (interior view)



Mundsburg Tower Hamburg



Charter House Manchester



Rheinpark Center Neuss





First Street Manchester



Furniture store Hirschberg



Park View Govan Glasgow



Ecole de Drize Geneva



LOUVRE. VENT. TECHNOLOGY.



### **FIEGER LAMELLENFENSTER GMBH**

Auf der Aue 10 • 69488 Birkenau i. Odw. • Germany  
+49 6201 84 434-0 • [info@fieger-lamellenfenster.de](mailto:info@fieger-lamellenfenster.de)  
[www.fieger-lamellenfenster.de](http://www.fieger-lamellenfenster.de)

### **FIEGER LTD**

Trafalgar Square Office • 8 Duncannon Street  
London WC2N 4JF • United Kingdom  
+44 (0)20 3855 5350 • [info@fieger.co.uk](mailto:info@fieger.co.uk)  
[www.fieger.co.uk](http://www.fieger.co.uk)



Highest eco-effectiveness  
Cradle to Cradle Certified™  
print products by Lokay

Cradle to Cradle Certified™ is a certification mark licensed by the Cradle to Cradle Products Innovation Institute.